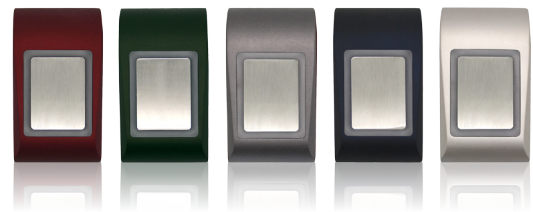


Request to exit button Scoria Touch

Scoria Touch is a metal, illuminated, timed, non-mechanical and ergonomically designed request to exit button. It is designed to operate in various high use, harsh and vandal prone environments.

Scoria Touch may be connected to the request-to-exit input of any access control or directly to an electric lock. It is activated at the lightest touch and is triggered by the user's own static electricity. With its slim looks and die-cast metal body, Scoria Touch combines elegance and aesthetics with ruggedness and reliability.



The request to exit button is available with your company profile. With your own logo or other motive puts you in the spotlight and thanks to the laser engraving technique you get a durable product with minimal impacts of wear.

Features

Scoria Touch

- ⦿ Feather light touch control
- ⦿ Works in Pulse and Latch mode
- ⦿ Ideal for a wide range of applications
- ⦿ Vandal-resistant
- ⦿ A separate terminal block to earth the housing
- ⦿ Audio and Visual indications
- ⦿ Front dual light indication
- ⦿ Buzzer sound on every touch

Specification

- Input voltage: 12V DC
- Current consumption: Min 45mA, Max 80mA
- Output: Relay (1A 24 DC / 120V AC)
- Illumination (LED): Normal - Red
- Operation - Green
- Operating Temperature: -15° - 55°C (internal use)
- Operating Humidity: Non-condensing up to 95%
- Dimension (mm): L92 x W51 x H25
- Housing: Die-cast zinc alloy housing
- Touch Plate: Stainless steel

Request To Exit Button Scoria Touch

Designation	Art no
Request to exit button with touch function (10-pack)	PV1170-X

Available in Red=R, Green=G, Dark Grey=D, Blue=B, Silver=SD